

*Join  
Us!*

# **VIRTUAL PUBLIC MEETING** *July 13 - July 31, 2020*

**US-62/SH-82 Intersection**  
and pavement overlay north 1.4 miles  
Cherokee County: JP 32105(04)

[www.odot.org/US62-SH82](http://www.odot.org/US62-SH82)



## **VIRTUAL PUBLIC MEETING**

The Oklahoma Department of Transportation will host a virtual public meeting to present the proposed improvements to the US-62/SH-82 intersection in Cherokee County. This meeting will present the design for the project and allow the public to submit input. Due to concerns over the spread of COVID-19, this will be a web-based format (no in-person meeting). The information will be available beginning July 13, 2020 and comments are requested by July 31, 2020.



## **Purpose**

The purpose of the project is to improve safety and traffic flow at the US-62/SH-82 intersection. Currently, traffic experiences congestion and delay at the existing traffic signal. This is expected to worsen and become significant by 2040. There have been 25 documented collisions at the intersection since 2013. Seventy-two percent of these were rear-end collisions, which could suggest congestion is a contributing factor.

ODOT proposes to construct a 3-legged roundabout at the US-62/SH-82 intersection. Roundabouts are a common intersection type that have been shown to reduce traffic delays and improve safety. The project also includes a pavement overlay on US-62 from the SH-82 intersection north approximately 1.4 miles.

The public may view the project design on the virtual meeting website and see additional information about roundabouts.



## **Join**

[www.odot.org/US62-SH82](http://www.odot.org/US62-SH82)



**OKLAHOMA**  
Transportation

July 8, 2020

Dear Stakeholders, Property Owners and Utility Owners:

Re: Intersection Modification at US-62/SH-82 Jct., Extending north approx. 1.4 miles on US 62 in Tahlequah, Cherokee County, ODOT JP No. 32105(04)

The Oklahoma Department of Transportation (ODOT), in cooperation with the Federal Highway Administration (FHWA), is proposing reconstruction of the US-62/SH-82 intersection in Tahlequah in Cherokee County. Currently, traffic experiences congestion and delays at the existing traffic signal. This is expected to worsen and become significant by 2040. There have been 25 documented collisions at the intersection since 2013. Seventy-two percent of these were rear-end collisions, which could suggest congestion is a contributing factor.

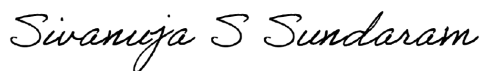
To improve safety and traffic control, ODOT is proposing to construct a 3-legged roundabout at the US-62/SH-82 intersection. Roundabouts are a common intersection type that have been shown to reduce traffic delays and improve safety. For this project, westbound through traffic on US-62 will proceed without entering the roundabout. All other traffic will use the roundabout. The project also includes a pavement overlay on US-62 from the SH-82 intersection north approximately 1.4 miles.

Due to ongoing concerns about COVID-19, ODOT will host a virtual public meeting from **July 13 to July 31, 2020** to present the design for the project and allow the public to submit input. Results of the detailed environmental studies conducted for the project will also be available to view. This pamphlet contains additional information about the virtual public meeting.

If you are leasing this property, please notify your lessee of this virtual public meeting.

Should you have any questions regarding this project, please email [environment@odot.org](mailto:environment@odot.org), or call 405-325-3269 and leave a detailed message.

Respectfully,



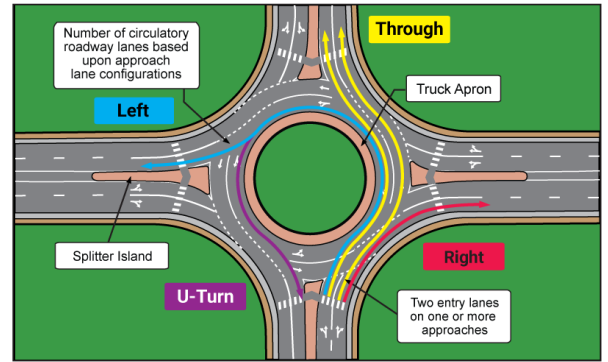
Siv Sundaram, P.E.  
Environmental Programs Division Engineer

The Oklahoma Department of Transportation (ODOT) ensures that no person or groups of persons shall, on the grounds of race, color, sex, religion, national origin, age, disability, retaliation or genetic information, be excluded from participation in, be denied the benefits of, or be otherwise subjected to discrimination under any and all programs, services, or activities administered by ODOT, its recipients, sub-recipients, and contractors. To request an accommodation please contact the ADA Coordinator at 405-521-4140 or the Oklahoma Relay Service at 1-800-722-0353 no later than 72 hours before any scheduled event. If you have any ADA or Title VI questions email [ODOT-ada-titlevi@odot.org](mailto:ODOT-ada-titlevi@odot.org).

*"The mission of the Oklahoma Department of Transportation is to provide a safe, economical, and effective transportation network for the people, commerce and communities of Oklahoma."*

# Modern Roundabouts

Modern roundabouts are a common form of unsignalized intersection control in use throughout the world. In a roundabout intersection, one-way traffic moves around a central island, and entering traffic must yield to circulating traffic. Modern roundabouts maximize safety by significantly reducing conflict points and minimize traffic delay since traffic does not have to take turns to use the intersection like at a traffic signal. Roundabouts are also more cost effective than traffic lights as they eliminate hardware, maintenance and electrical costs associated with the signals.

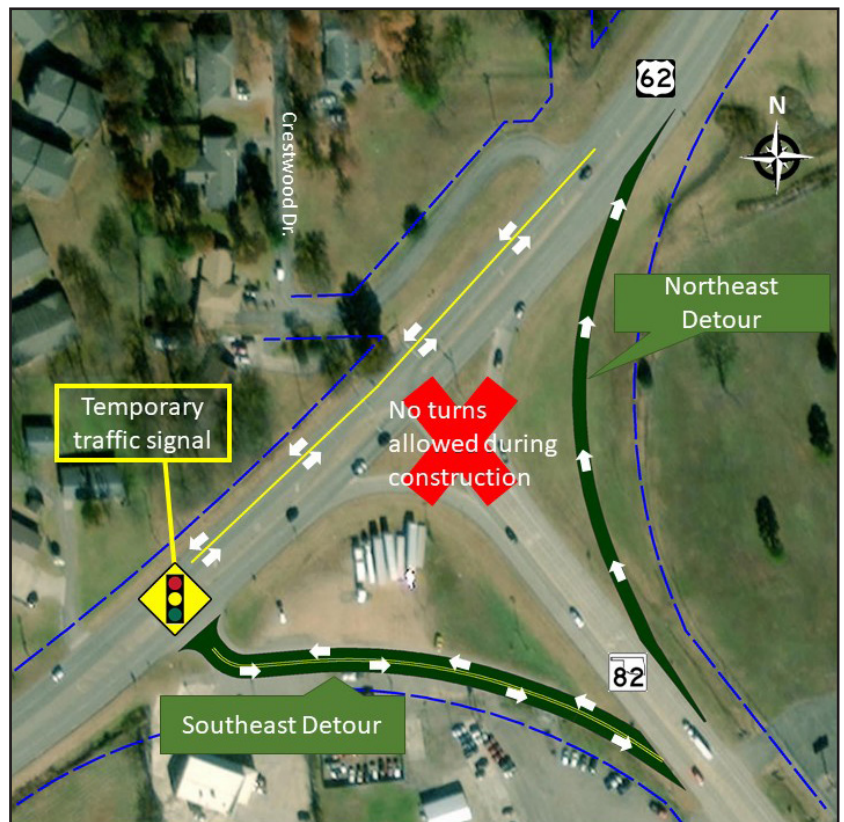


## Project Description

ODOT proposes to construct a 3-legged roundabout at the US-62/SH-82 intersection. However, there are some differences between this roundabout and other roundabouts you may have driven. At the US-62/SH-82 roundabout, westbound traffic on US-62 will no longer have to stop at the intersection and will not use the roundabout. All other traffic will use the roundabout. Traffic entering the roundabout will yield to traffic already in the roundabout. There will be stripes and arrows to guide traffic, as well as concrete splitter islands. The City of Tahlequah and the Cherokee Nation are planning to use the center of the roundabout for landscaping or a monument. No additional right-of-way will be required. All existing driveways and access to properties will remain, although there may be some temporary detours during construction (see below). The project will also include a pavement overlay on US-62 from SH-82 north approximately 1.4 miles.

## Construction

The existing intersection will need to be closed during construction. However, traffic will still be able to travel in all directions with the use of temporary detours. There will be two detours, one on the southeast corner of the intersection and one on the northeast. There will be a temporary signal at the intersection of the southeast detour and US-62. Construction is expected to start in 2023 and last for approximately 6 months. Construction could be advanced if funding becomes available.



Detour Exhibit

## UPCOMING PROJECTS IN CHEROKEE COUNTY

- **SH-82:** Begin 1.4 Miles N. of US-62/SH-51 Jct., Extending NW to SH-82/W 710 Road, JP 27101(04): 2022
- **SH-82:** Begin at SH-82/W 710 Rd. Jct., N. approximately 2.25 Miles to Fourteen Mile Creek, JP 27101(09): 2022
- **SH-10:** Cable Barrier Safety Improvement from Approx. 12 Miles NW of Tahlequah, N. 10 Miles to Delaware County Line, JP 32095(04): 2023
- **SH-10:** Bank Protection from approx. 12.4 Miles NE of SH-51 Junction (Illinois River), JP 28969(04): 2023
- **SH-51:** Widen and Resurface from Hulbert East Approx. 8 Miles to Tahlequah, JP 30553(04): 2023
- **SH-82:** Widen, Resurface, and Bridge from 4 Miles S. of SH-100/SH-82 Jct North 4 miles, JP32097(04): 2023
- **SH-82:** Widen and Resurface from 2.57 Miles S. of SH-82C Junction, N. 6 Miles, JP 30575(04): 2025
- **US-62:** Jct. US-62 and SH-51 Intersection Improvement, JP 33805(04): 2026
- **SH-100:** Widen, Resurface and Bridge from 3 Miles N. of Cherokee County Line extend E. 5 Miles, JP32098(04): 2026
- **SH-100:** Bridge and Approaches over Dry Creek, 0.5 Mile E. of Jct SH-82, JP 28029(04): 2026
- **SH-82:** Resurface, begin at S. Indian Rd. in Pettit, Extend N. 4.73 Miles to US-62 Jct, JP 34351(04): 2027

## PROJECT INFORMATION SUMMARY

- Total Estimated Construction Cost of Project: **\$4.5 Million**
- Utility Relocation Programmed to Start in: **2021**
- Construction Programmed to Start in: **2023**
- Current Annual Average Daily Traffic (AADT) in year 2018: **24,000 vehicles per day (US-62); 12,000 vehicles per day (SH-82)**
- Future Estimated AADT by Year 2040: **36,000 vehicles per day (US-62); 18,000 vehicles per day (SH-82)**

\*Totals DO NOT include Toll Roads

**DIVISION 1 ENGINEER: CHRIS WALLACE, P.E.**

\*\*Totals DO NOT include County Bridges

**\*Total Road Miles:**  
1,110.70

**\*Total Interstate Miles:**  
97.31

**\*\*Total Bridges:**  
704

**Counties:** Adair, Cherokee, Haskell, McIntosh, Muskogee, Okmulgee, Sequoyah, Wagoner



**PLEASE PROVIDE YOUR COMMENTS BY JULY 31, 2020**

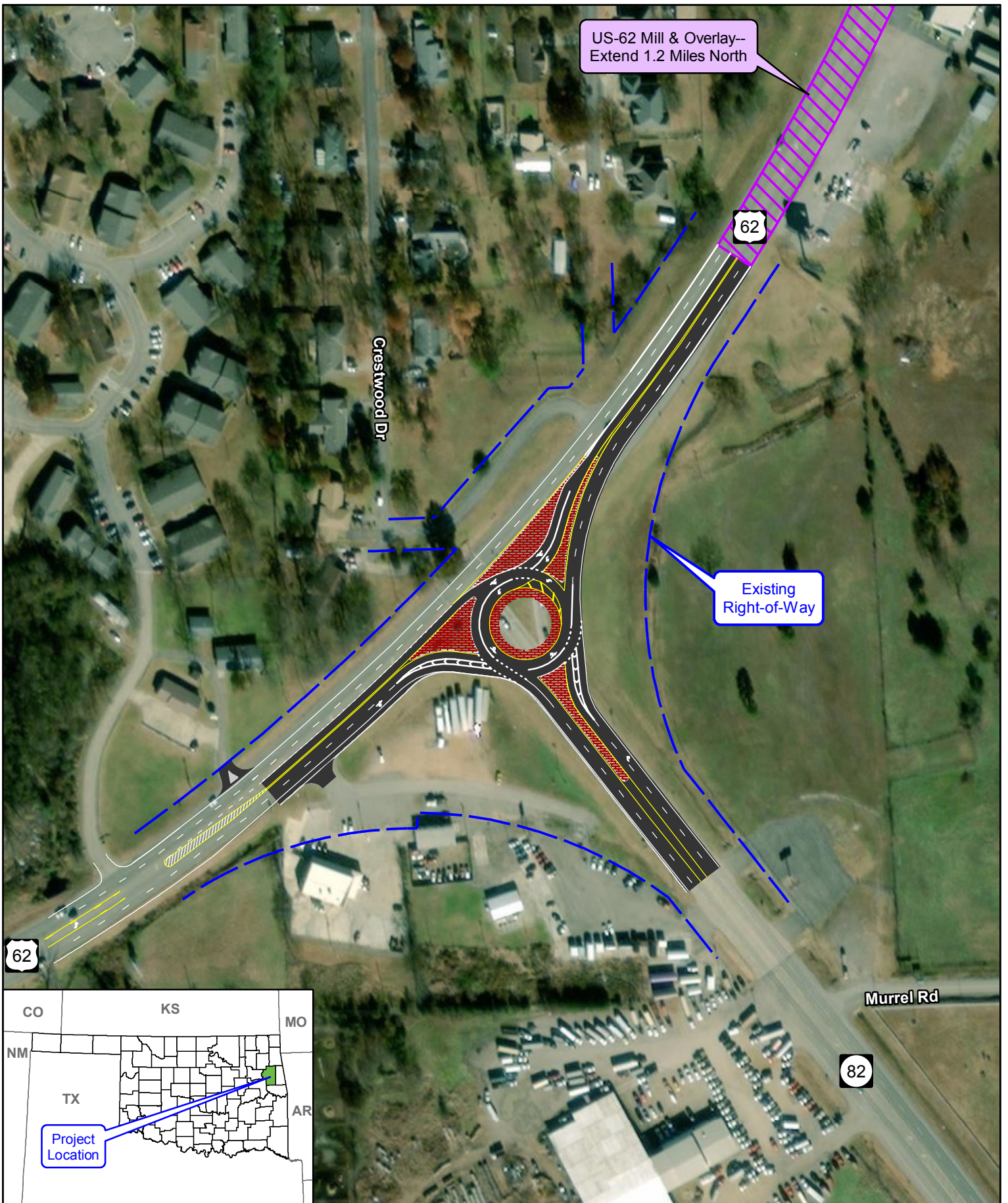
**For more information  
about the project**

(405) 325-3269  
environment@odot.org

**<http://www.odot.org/publicmeetings>**







US-62 Mill & Overlay--  
Extend 1.2 Miles North

62

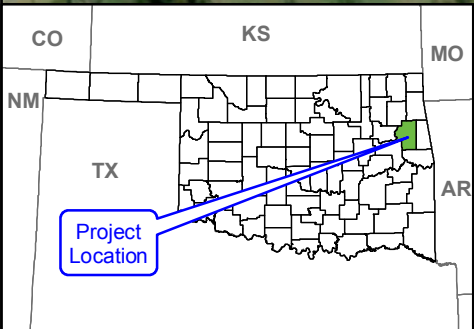
Crestwood Dr

Existing  
Right-of-Way

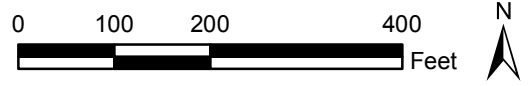
62

Murrel Rd

82



Oklahoma Department of Transportation  
Proposed Design Layout  
Cherokee County



JP 32105(04) - US-62: From 0.2 Mile South of US-62/SH-82 Junction, North Approx. 1.4 Miles  
(with Intersection Modification)